



# BUCKNER SHOPPING CENTER

6-30 E. Monroe Street, Buckner, Missouri



## LEASE RATE: \$8/SF | 744 TO 4,500 SF AVAILABLE

### DEMOGRAPHICS

	1 mile	3 miles	5 miles
Estimated Population	2,351	4,174	6,656
Avg. Household Income	\$80,455	\$89,473	\$91,048

- Grocery Anchored Shopping Center
- Rare Retail Opportunity in the Buckner Area
- All Spaces Enjoy Excellent Access and Visibility to 24 Highway
- Low, Affordable Lease Rates
- Great Signage and Parking for all Tenants

 [CLICK HERE TO VIEW MORE LISTING INFORMATION](#)

For More Information Contact:

*Exclusive Agents*

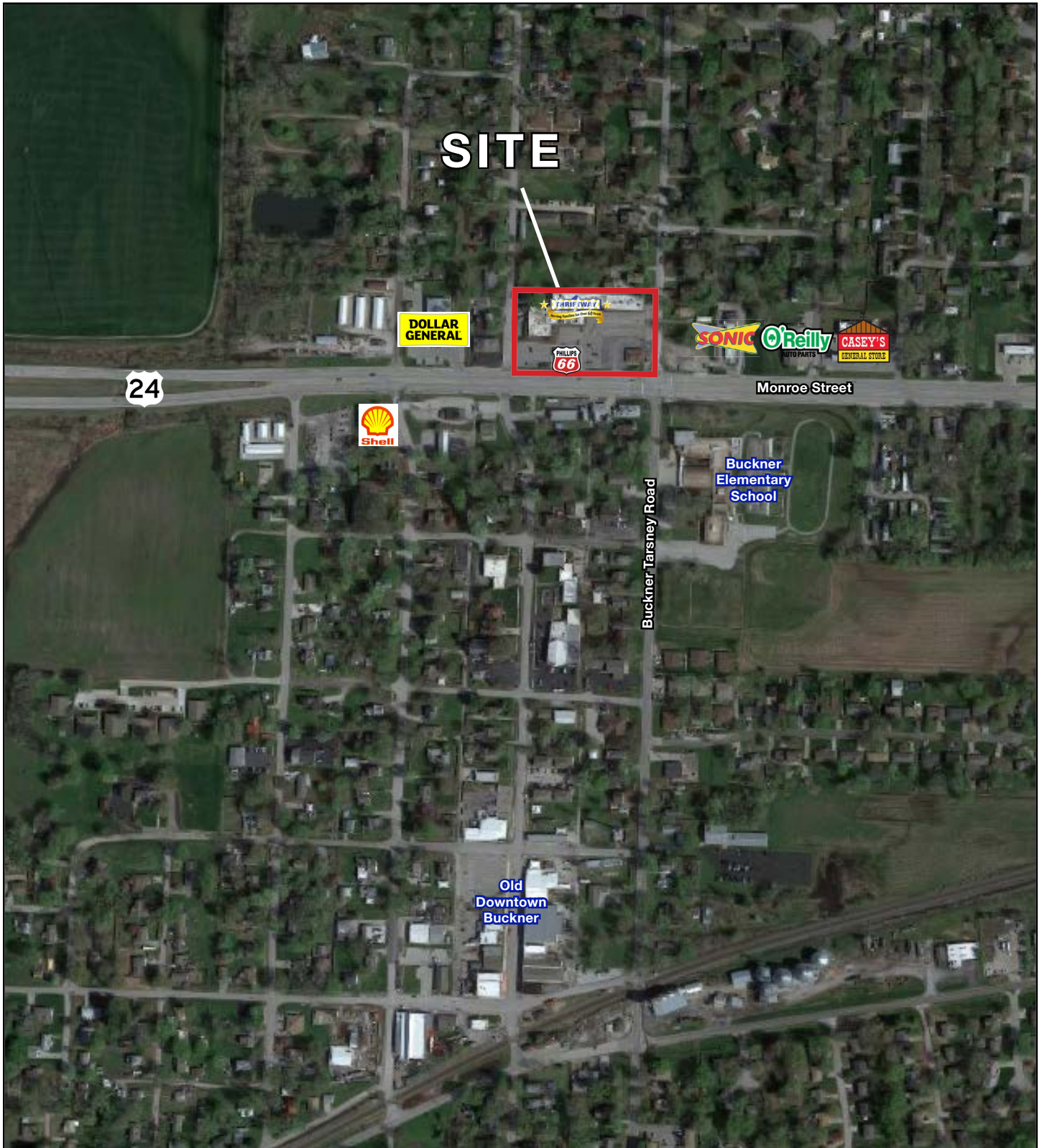
JAY FRIEDMAN | 816.412.7334 | [jfriedman@blockandco.com](mailto:jfriedman@blockandco.com)

EVAN STONE | 816.412.7324 | [estone@blockandco.com](mailto:estone@blockandco.com)





## AERIAL

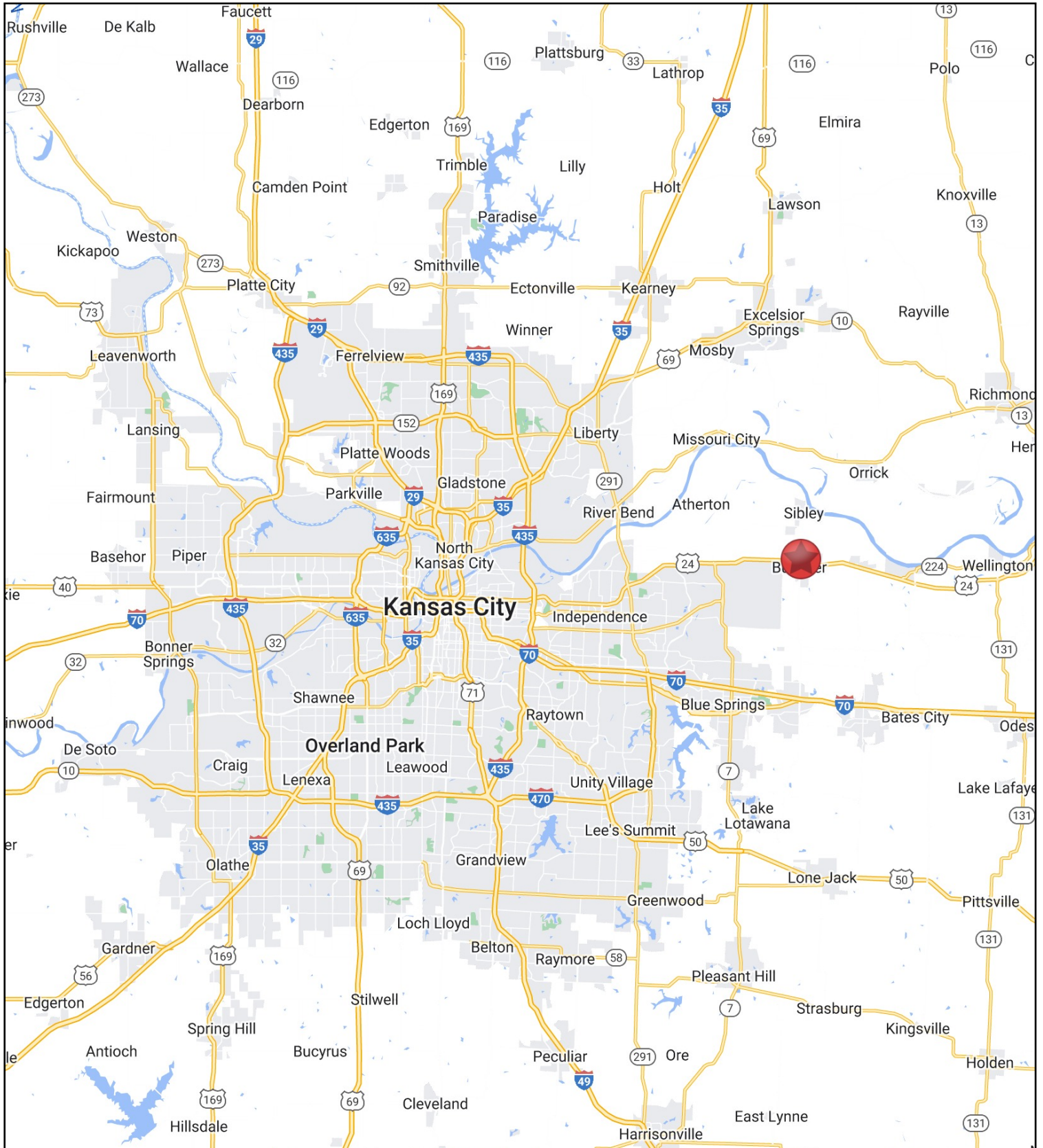






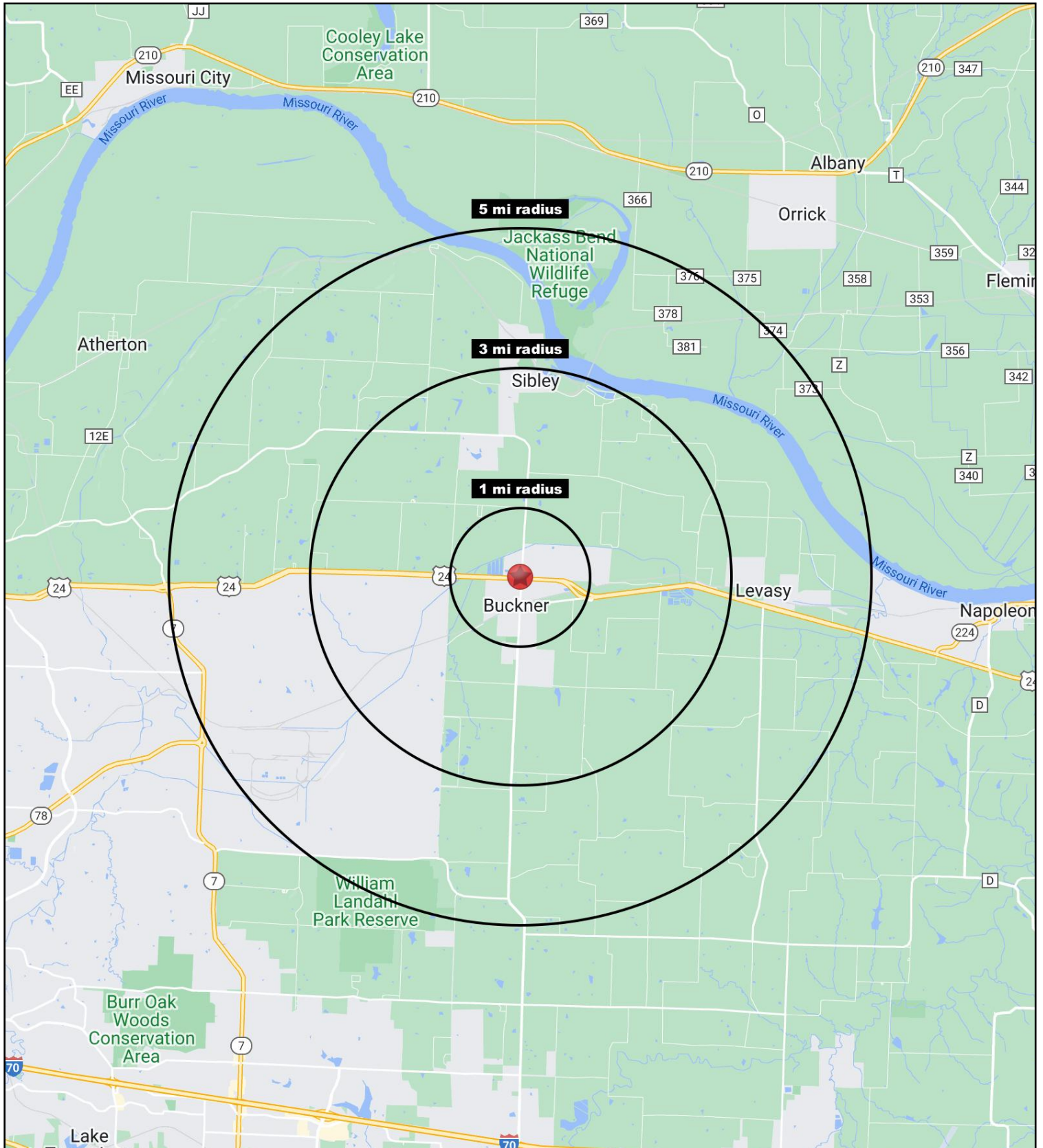
# BUCKNER SHOPPING CENTER

6-30 E. Monroe Street, Buckner, Missouri



# BUCKNER SHOPPING CENTER

6-30 E. Monroe Street, Buckner, Missouri







# BUCKNER SHOPPING CENTER

6-30 E. Monroe Street, Buckner, Missouri

6-30 E. Monroe Street Buckner, MO 64016	1 mi radius	3 mi radius	5 mi radius
<b>Population</b>			
2022 Estimated Population	2,351	4,174	6,656
2027 Projected Population	2,372	4,222	6,778
2020 Census Population	2,377	4,141	6,633
2010 Census Population	2,496	4,291	6,785
Projected Annual Growth 2022 to 2027	0.2%	0.2%	0.4%
Historical Annual Growth 2010 to 2022	-0.5%	-0.2%	-0.2%
2022 Median Age	36.5	38.4	40.7
<b>Households</b>			
2022 Estimated Households	926	1,603	2,511
2027 Projected Households	929	1,615	2,546
2020 Census Households	932	1,587	2,497
2010 Census Households	946	1,588	2,489
Projected Annual Growth 2022 to 2027	-	0.1%	0.3%
Historical Annual Growth 2010 to 2022	-0.2%	-	-
<b>Race and Ethnicity</b>			
2022 Estimated White	85.0%	86.1%	86.1%
2022 Estimated Black or African American	3.0%	3.0%	3.4%
2022 Estimated Asian or Pacific Islander	0.7%	0.8%	0.9%
2022 Estimated American Indian or Native Alaskan	0.5%	0.5%	0.5%
2022 Estimated Other Races	10.8%	9.6%	9.1%
2022 Estimated Hispanic	5.1%	4.7%	4.8%
<b>Income</b>			
2022 Estimated Average Household Income	\$80,455	\$89,473	\$91,048
2022 Estimated Median Household Income	\$63,057	\$74,036	\$78,426
2022 Estimated Per Capita Income	\$31,672	\$34,384	\$34,420
<b>Education (Age 25+)</b>			
2022 Estimated Elementary (Grade Level 0 to 8)	2.9%	2.0%	1.6%
2022 Estimated Some High School (Grade Level 9 to 11)	9.3%	9.3%	8.2%
2022 Estimated High School Graduate	40.0%	40.3%	39.6%
2022 Estimated Some College	24.0%	20.1%	18.4%
2022 Estimated Associates Degree Only	4.8%	5.9%	7.2%
2022 Estimated Bachelors Degree Only	16.1%	18.2%	18.9%
2022 Estimated Graduate Degree	2.9%	4.2%	6.2%
<b>Business</b>			
2022 Estimated Total Businesses	37	62	133
2022 Estimated Total Employees	187	350	1,704
2022 Estimated Employee Population per Business	5.0	5.7	12.8
2022 Estimated Residential Population per Business	63.0	67.8	50.2

©2022, Sites USA, Chandler, Arizona, 480-491-1112 Demographic Source: Applied Geographic Solutions 6/2022, TIGER Geography - RS1

